



Soft & Serene

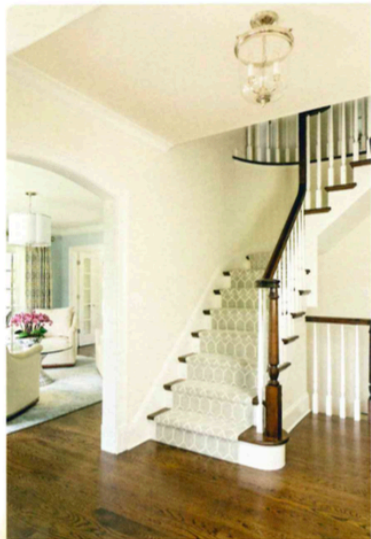
Marlaina Teich Designs
beautifully family friendly

PHOTOGRAPHY BY TIM CREE/CREEP/WALK MEDIA



French doors and a two sided fireplace add architectural detail and perfectly divide the previously long rectangle space into a living room and a family room.

Deep swivel chairs in a luxurious, striated fabric hug a glass topped cocktail table – making for easy “chatting” while relaxing or entertaining. A hand knotted area rug in wool and silk artfully combines the sandy neutrals and soft blues of the room’s color scheme. A Barbara Barry drum shade chandelier centers the grouping perfectly.



This staircase is original to the 1943 home. A geometric carpet runner adds a modern touch to a traditional space. The Hudson Valley semi flush lantern is a simple but perfect fit in the foyer.

by Jessica Robb

This Manhasset home is the quintessential stunner for anyone considering a full home renovation. The Garvin family was searching for a designer experienced with large-scale renovations and they found the perfect match with interior designer Marlaina Teich.

Working closely with the

architecture firm Hierarchy Architects as well as Bargail Construction was key. The village of Munsey Park can be a difficult village to build in with zoning footprints that are fairly tight. Maximizing every inch of space to its best function was the priority. One area of the home was partic-

ularly tricky. The original living room was an extremely long rectangle, which made for an awkward furniture layout and truly hindered the use of the space. Hierarchy proposed a two-sided fireplace to divide the space, flanked by beautiful French doors. Now, there is a wonderful living room

with four custom swivel chairs, set up “chat style” where the Garvin’s enjoy cocktails with their guests, while on the other side of the fireplace, the kids are happily hanging out in the great room playing and watching TV. Reducing the original large rectangular living room and making a smaller pro-



The exquisite Stroheim fabric on this custom designed sectional was treated with an extra layer of protection for heavy family room use. The button tufted cocktail ottoman serves as extra seating as well as a place to put books, snacks or ones' feet up. The material is anti-microbial and easily wipes up in case of spills or dirty fingerprints. The diamond patterned area rug adds a playful element to the space. The cabinet beneath the TV was custom sized to fit between the two windows.



This sectional was custom made by Marlaina's "to the trade" workroom. The Garvins' were invited to a "fitting" so that the depth, pitch and comfort of the seat would be perfect for their specific heights and builds. Small brushed nickel nail heads border the arms and base.



The Bardiglio Gray Marble surround has just the right amount of color and movement and works perfectly in both rooms on either side of the fireplace.

portioned "clubroom" allowed for more space in the family room and kitchen as one connected contemporary space.

Considering the Garvin's lifestyle when designing their home was the first step in Marlaina's process. From furniture layouts and finish selections for everything from flooring to hardware, cabinetry, hard surfaces and soft, everything was selected taking the client's needs and desires into account. The Garvin's have two young children and an active lifestyle so choosing fabrics and finishes that were not only beautiful but extremely family friendly was important. The color palette of sandy neutrals and soft ocean blues was specified to create a serene, calming environment that provides a respite to the lively lifestyle the family enjoys.

One favorite touch is the expansive kitchen, designed with Showcase Kitchens of Manhasset, that pours out directly into the fam-



The Jacobean stained oak floors provide a warm contrast to the crisp white cabinetry from Showcase Kitchens and served as a jumping off point for the finish selections of the Old Biscayne table, chairs and island counter stools. Brushed nickel light fixtures and hardware add just the right amount of sparkle.

ily room allowing for the flow of family and guests while entertaining. White cabinetry and countertops and touches of soft blue remind the family of vacations spent on the North Fork and encourages a fresh, open feel to the space. The large center island is perfect for prepping large meals and for an easy place for family and friends to gather.

Having long relationships with many quality manufacturers – both locally and throughout the country – in every realm of design including furniture, hardware, lighting, rugs and wallcoverings, make creating custom furnishings a breeze. Almost every piece of furniture in the Garvin's newly renovated home was custom

sized, designed and finished specifically for them. Marlaina loved working closely with the Garvin's to create a home that is truly perfect for them from the ground up. The Garvin's felt the same way, saying, "We absolutely loved working with Marlaina. She took all of our ideas and made them better. She is a complete professional and the process was smooth – and FUN! – from start to finish." 🏡

Designer – Marlaina Teich
Marlaina Teich Designs
Contractor – Nino Bargail
Construction
Architect – Hierarchy Architecture
Kitchen – Showcase Kitchens



The chairs were customized with a specialty finish to highlight the "x" in these solid wood dining chairs. The table was sized specifically to the client's space to maximize seating.



Blending Warmth and Style

Showcase Kitchens mixes modern elements with rustic touches



Pompai glass half pearl tiles were used on the backsplash to give movement and create a beachy, country feel.

The peppercorn walnut island is the perfect place for a meal and conversation - conveniently located by the Viking Professional Series range and refrigerator, even the cook can partake in the party.

By Hilary Grossman

"The kitchen is where everyone wants to be 95 percent of the time," the homeowner explained. "Unfortunately for us, the house we purchased had a 30 year old kitchen. And while it was functional, a makeover was in need."

The couple had edited rooms in the past, but they never participated in a home renovation before. Unaware of how to attack the project, they began

looking at appliances and were introduced to Showcase Kitchens of Massapequa. The referral was just what they needed to help their dreams transform into reality.

"The homeowners wanted to keep the kitchen flowing with the rest of the house," Michael Rosenberg, kitchen designer and partner at Showcase Kitchens of Massape-

qua explained. "We kept the footprint of the kitchen, but raised the cabinets to create balance and height which the original kitchen didn't have. French doors were removed to make the space bigger and allow natural light in. Viking Professional series appliances were selected. To keep the country-like feel we used a

Blanco white farm sink."

"Working with Michael was amazing," the homeowner stated. "It was a true partnership. He was so attentive. My husband would email him all hours of the day and night and he'd always reply quickly. It was clear he wanted us to be happy and we are!" 🏡

PHOTOGRAPHY BY TIM CREECH/PWALK MEDIA



"The Blanco farm sink was a no brainer," explained the homeowner. Rohl faucets were selected to complete the country look.

MODERN ORGANIC KITCHEN

Showcase
Kitchens
Inspires

By Hilary Grossman

Natural light from the windows and skylights showcase the custom book-matched vertical grain walnut cabinets - making the kitchen a warm and inviting spot for guests and chefs alike.

"I wanted to enter the kitchen and feel relaxed," the homeowner explained. The couple took over the home, modeled after a Frank Lloyd Wright house, from their parents. The kitchen, which was long and narrow, was opened up to create one space for the kitchen, living and dining rooms.

With the help of John Starck, kitchen designer and president at Showcase Kitchens of Manhasset, the couple's dream became a reality.

"Part of the inspiration," explained Starck, "was to align the skylights to the center of the island. Also, the hood and range became the axis of the room, with windows on both sides, further opening the space to make the outside more inviting."

"This truly is an export/import kitchen," Starck continued. "American walnut logs were exported to Italy in order to build custom cabinets which were then imported back into the United States to be installed."

"We're floored by the island," the homeowner raved. "The wood, Quartzite countertop and the functionality of the second sink and dishwasher all make the space perfect. There is nothing I would change!"

The homeowner also added, "Showcase was so accommodating and responsive. They work so well with you and other professionals. John encouraged me to add a steam oven to modernize the kitchen and I am so glad I listened. It is my favorite appliance." 🏠

PHOTOGRAPHY BY TIM CREE/CREEPWALK MEDIA



Wolf range and hood became the axis of the room in this one-of-a-kind kitchen with custom, book-matched vertical grain walnut cabinets imported from Italy. Mother of pearl backsplash creates spa like feel.

The family who spends a lot of time cooking loves their Wolf and Sub-Zero appliances. But the Wolf Steam Oven is by far their favorite appliance.