

The center island was placed cater-corner to perimeter cabinets, assuring wide passages. The room's primary sink, a vintage-inspired copper farmhouse model, is in the island. The checkerboard countertop is a unique feature.

the company

KITCHEN DESIGN

John Starck, **SHOWCASE KITCHENS**, New York NY: showcasekitchens.com

ARCHITECT T.J. Costello, **HIERARCHY ARCHITECTS**, Manhasset, NY: hierarchyld.com

BUILDER Todd Mitchell, **MITCO ASSOCIATES**, Bellmore, NY: mitcopro.com

sources

OAK FLOORING CARLISLE WIDE PLANK FLOORS wideplankflooring.com

BACKSPLASH mosaic faux-brick metal tile in Antique Bronze Blend **QUESTECH** questech.com

LIGHTING REJUVENATION rejuvenation.com

COUNTERTOPS (butcher block) custom fabrication **GROTHOUSE LUMBER CO.**, Germansville, PA: glumber.com

COPPER SINK 'Brick Design' rustic apron-front farmhouse sink **COPPER SINKS** online coppersinksonline.com • similar, see farmhouse sinks **NATIVE TRAILS** nativetrails.net

BIN PULLS bronze-finish cup pull **TOP KNOBS** topknobs.com

for an open plan, REVIVAL MOTIFS

by Patricia Poore | photographs by Ric Marder

REMODELING THE KITCHEN was a major project in this owner's upgrade of a Long Island house built in the 1950s. The old kitchen was dated and confused: Colonial Revival mouldings on stock golden-oak cabinets, a tiny island with clipped corners, low-end laminate countertops and white appliances, all with a smattering of generic wallpaper. Homeowner Robert Jackman hatched the overall design and suggested many of the details.

"I went to college in Southern California," Jackman says, "and fell in love with the Greene & Greene houses in Pasadena. Over time, I became more and more a student of the Arts & Crafts movement."

IN THE LANGUAGE OF CRAFTSMAN

- Cabinets get a period look from the use of quarter-sawn oak and traditional joinery; each door has a framed, solid wood center panel, another traditional detail.
- Colonnades create an open feel while providing separate rooms, as in period bungalows.
- The style-neutral range is built into a hearth-like niche with a “mantel” shelf.
- Banquette seating suggests an old-fashioned breakfast nook.
- Wide-plank flooring was laid in various widths. (Narrow strip floors came later.)
- Hardware and lighting fixtures are period reproductions.



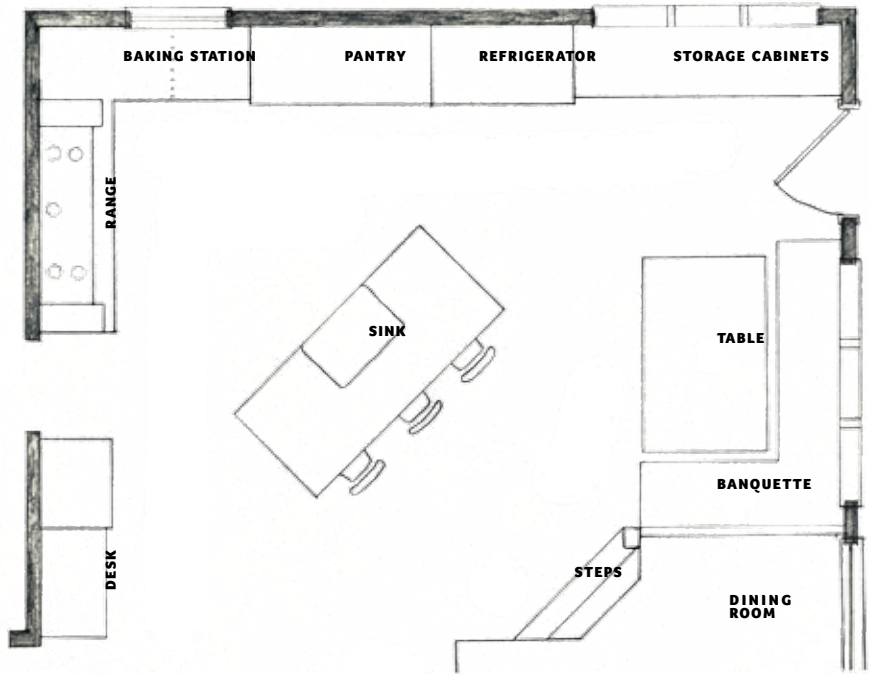
ABOVE The kitchen table and banquette overlook the backyard. **LEFT** A hidden recycling drawer was designed into the banquette, which affords storage. **FAR LEFT** Cool Carrara marble, traditional for baking stations, is used for the pizza-making countertop; the man of the house is a self-proclaimed pizza chef. Cabinets are in stained white oak, even on the interior.

A zoned floor plan

During the full-out renovation of the undistinguished 1950s house, the kitchen grew to become the heart of the home. Its careful layout, though, breaks it into various work and living spaces, giving the room a human scale not seen in most open-plan kitchens.

The working corner of the kitchen moves from range to baking (or pizza prep) area to pantry and fridge. The breakfast nook, set near a large window, is cozily tucked into a colonnade. Here, a separate bank of storage cabinets takes the place of a sideboard.

The unusual placement of the center island allows for wide corridors, creating a smooth traffic flow unimpeded by right angles and tight corners.





TOP LEFT A desk occupies one end corner of the room: upper cabinets serve as a pantry, and lower drawers hide an extra freezer. **ABOVE, RIGHT** Vertical panels around the stove are pullout spice racks. The room also has freezer and cold-beverage drawers.



Jackman and his wife, Naomi, knew they'd look to the Arts & Crafts vocabulary for the renovation. He chose traditional wood species: quarter-sawn white oak, American cherry. This is new work, frankly embracing a professional-style range and a large, built-in refrigerator. (All appliances are by Sub-Zero and Wolf.) The design uses motifs of the past; the range is built into a hearth-like niche, for example, and a colonnade divides the room. The period-inspired kitchen features framed white-oak cabinetry, a wide-plank wood floor, and banquette seating that evokes a breakfast nook. Lighting is transitional, alluding to the gaslight and early-electric eras.

"Because of my work in cabinetmaking, I was fussy about joinery," Jackman says, "insisting on traditional mortise-and-tenon and dovetail joints." He himself built some key pieces, including the kitchen table, several doors, even the basement staircase.

The center island features a 2½"-thick end-grain countertop in a checkerboard pattern (alternating walnut and maple) with a mahogany border. The prep area near the stove is a "pizza station" featuring a low-height marble slab for kneading dough. The use of copper in the room—for the stove backsplash, the farmhouse sink, a breadbox—looks back to its predominance in art metalwork. The golden chartreuse wall paint is right out of the bungalow era. ■